



BATTERY WATERING TECHNOLOGIES

THE LEADER IN BATTERY WATERING TECHNOLOGY™

DRAWING NUMBER: B-48-17-LP-357

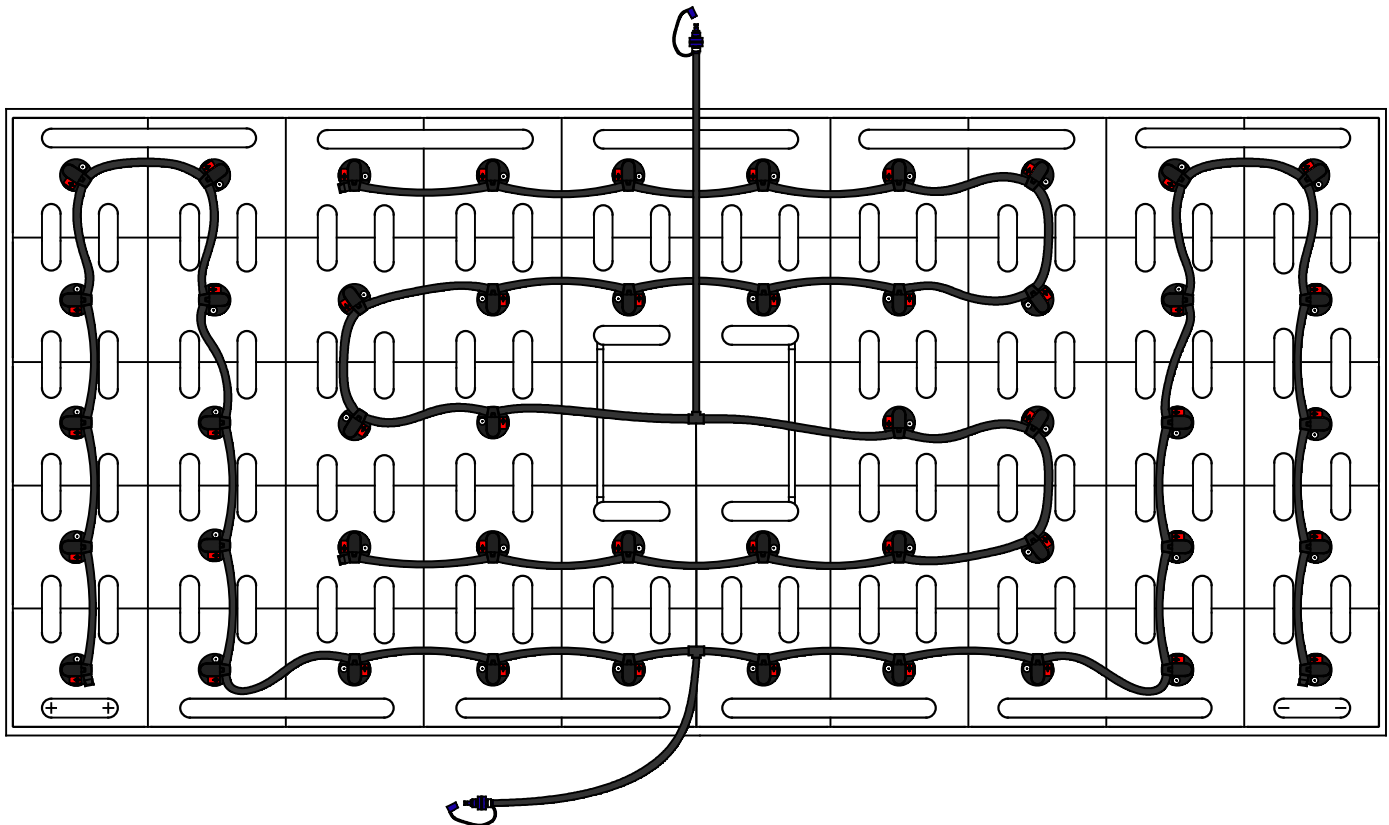
48 CELL

17 PLATE

(WITH OR WITHOUT COVER)

TRAY SIZE: 66.50" X 33.00"

REV. 2 01/10/2020



| PART # | DESCRIPTION | QTY. |
|-----------|---------------------|------|
| Various | Low Profile Valve | 48 |
| 08TUB6BLK | 6mm Tubing | 31' |
| 09BDCAP | Dust Cap | 2 |
| 08CAP6 | End Cap | 4 |
| 08T666N | T Piece 6-6-6 | 2 |
| 09MBLU1 | 1/4" Male Connector | 2 |
| - | - | - |
| - | - | - |

INSTALLATION INSTRUCTIONS

Only water batteries after charging. Do not leave unattended.

1. Remove existing battery caps.
2. Ensure the electrolyte level is covering the plates in each cell. If not, add just enough water to cover the plates.
3. Following the diagram above, insert the valves into the vent holes.
4. Push straight down on each valve until it snaps into the cell.
5. Make sure all tubing remains unobstructed.

336-714-0448

www.batterywatering.com